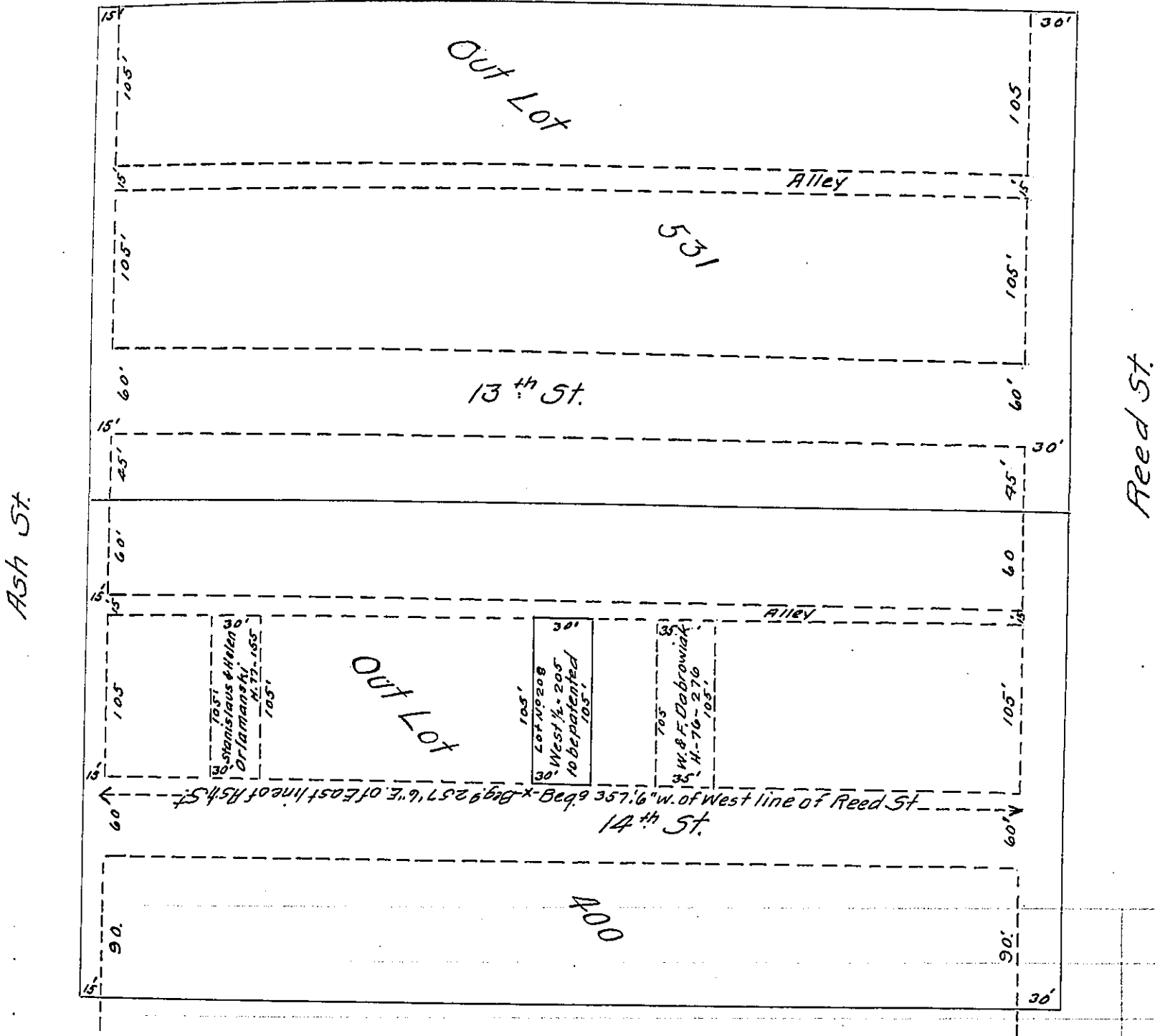


12th St.



Draft of part of Erie Out Lot No. 400, and being one half of Sub lot No. 205 and Sub lot No. 208 in Moorheads Subdivision, patented to Michael Polaski and Mary his Wife, Situate in City of Erie, Erie County. Red lines show original lines of Out lot.

Constructed by
 September 23^d 1908. J. Sutton Wall
 Chief Draftsman

IN TESTIMONY that the above is a copy of the original remaining on file in the Department of Internal Affairs of Pennsylvania, made conformably to an Act of Assembly approved the 16th day of February, 1833, I have hereunto set my Hand and caused the Seal of said Department to be affixed at Harrisburg, this ninth day of November 1908.

Henry Howell
 Secretary of Internal Affairs.